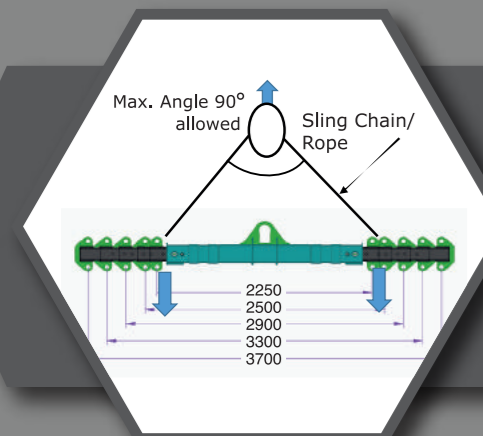


ACCESSORIES

SUPPORT NETWORK

Experience Our Mobile Service Van For Fast And Reliable Solutions



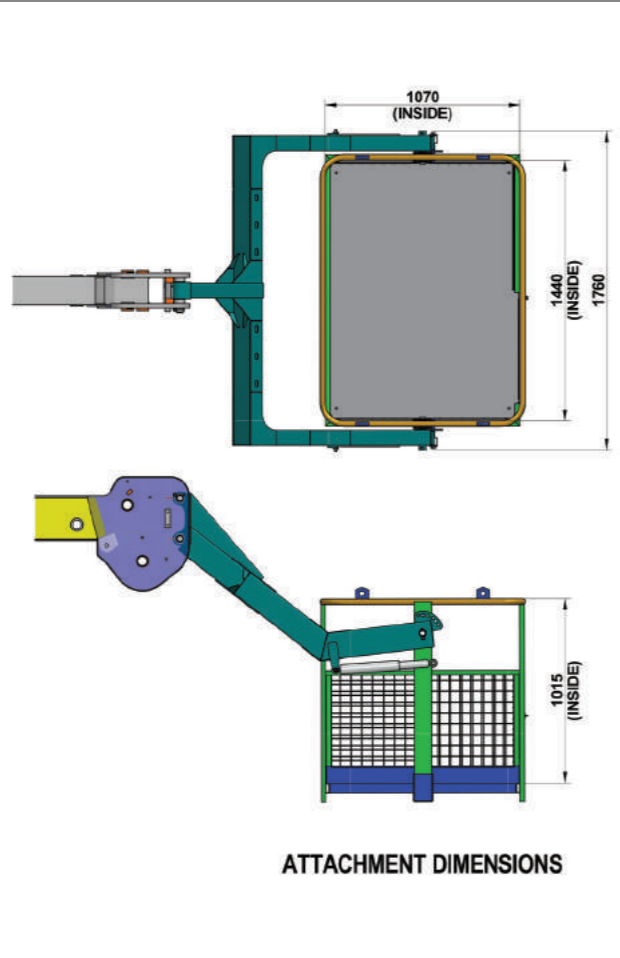
SPREADER BAR CUM LIFTING BEAM

Spreader Bar is used to aid crane operators in picking up large and sometimes heavy loads. It increase the stability and handling of load during hoisting and traveling with load.

Lifting Capacity- 2.5 Tonnes to 15 Tonnes (depending on the crane load chart)

Beam Expend Range: 2250 mm to 3700 mm

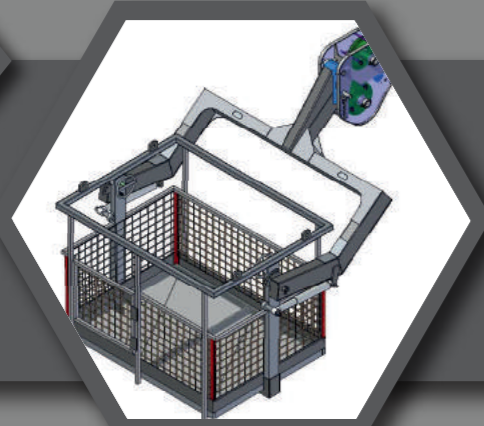
Note: Attachment view is for ref. only. Physical part may be differ from provided.



MAN CARRYING BASKET

| ATTACHMENT SPECIFICATION | | |
|--------------------------|----------------|------|
| ATTACHMENT WEIGHT | KG | 240 |
| MAX. CAPACITY | KG | 235 |
| NO. OF PERSONS. | N ^o | 2 |
| PLATFORM LENGTH | mm | 1440 |
| PLATFORM WIDTH | mm | 1070 |

Intended use
The machine has been designed to lift people and handle small tool, max load 235 kg or 2 persons



BE CAREFUL!
When in the firm the same machine is to be used by more than one operator, working instructions as well as the use and maintenance manual must be conveyed to all the operators in charge of the machine.



ADDRESS:

North Zone
ESCORTS LTD. - CONSTRUCTION EQUIPMENT
4th Floor 409, Jasola Vihar,
Elegance Tower, Near Apollo Metro Station,
New Delhi – 110019

East Zone
ESCORTS LTD. - CONSTRUCTION EQUIPMENT
Eco Centre, Ambuja Neotia,
609, 6th Floor, EM Block,
Salt Lake Sector-V, Kolkata – 700091

West Zone
ESCORTS LTD. - CONSTRUCTION EQUIPMENT UNIT 1,
3rd Floor, A-Wing, Times Sqaure,
Andheri - Kurla Road, Opp. Mittal Industrial Estate,
Andheri (East), Mumbai – 400059

South Zone
ESCORTS LTD. - CONSTRUCTION EQUIPMENT
Subham Square, 1st Floor, S.No.41/9, 1st Main Road,
Karambakkam, Porur, Chennai – 600116.

MKT/21.1/2712XTR



WHEN YOU NEED EXTRA 2712 XTR

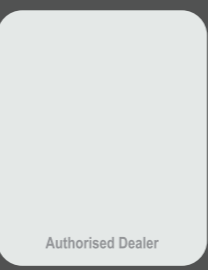
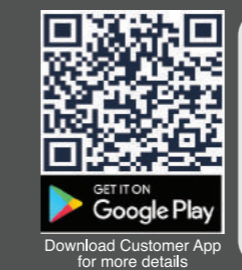
Low Creep Speed: 1.3 Kmph | SLI - Safe Load Indicator | Reverse Parking Camera
EMS - Equipment Monitoring System | LED Work Lamp on Boom



Customer Support No.:
1800 180 4488
(Timings: 9.30 am - 6.00 pm, Monday to Friday)

E-mail:
ece.marketing@escorts.co.in

Escorts Construction Equipment: Plot No. 219, Sector-58, Ballabhgarh- 121004, Faridabad, Haryana (INDIA)
Tel.: 0129-2306574/2306598/2306571 Fax: 0129-2306572 Website: www.escortsgroup.com



ESCORTS WHITE LINE

SPECIFICATIONS

RATED CAPACITY

| | |
|-----------------|--------------|
| 27 Tonne at | 1.5 m radius |
| 4.2 Tonne at | 8.5 m radius |
| Max Hook Height | 12.1 m |

ENGINE (BS IV)

Volvo - Eicher make CEV BS IV Diesel Engine, Model E494TCI - High Pressure Common Rail System (HPCR) Technology, Turbo Charged Water Cooled, ECU Control Engine Management System, Developing 101 Kw/137HP @ 2200 RPM or Equivalent Engine.

TRANSMISSION & CLUTCH

| | |
|------------------|--|
| Drive | Mechanical - 2WD (Rear Wheel Drive) with Hi/Lo |
| Type | VECV: 6F+1R Transmission |
| Clutch | Dry Friction Plate |
| Clutch Actuation | Pneumatic Assisted Hydraulic clutch |
| Speeds | 12 forward and 2 reverse |
| Max Travel Speed | 41 Km/h |
| Creep Speed | 1.3 Km/h |
| Gradeability | 35% (Unladen) |

STEERING

| | |
|--|--------------------------|
| Full Power orbital with twin Hydraulic double acting cylinders | |
| Type | Fixed Steering Column |
| Articulation | Up to 35° on either side |
| Turning Radius | 8.5 m (min) |

CONTROL VALVE

Main Control Valve - Proportional control valve hydraulically actuated through joy stick, 3 spool double acting with a built in relief and auxiliary valves
Outtrigger Control valve - 3 spool manual proportional control valve with built in pressure relief valve

AXLES

| | |
|-------|--|
| Front | Dead Axle-Rigid Mounting |
| Rear | TATA Drive Axle- Mounted on Leafspring |

BRAKES

| | |
|-------------|--|
| Service | Air operated brakes on rear axle. Pneumatically assisted hydraulic brakes. |
| Parking | |
| Rear Wheel | Spring loaded brake, Air-released on rear axle. |
| Front Wheel | Pneumatically assisted Spring loaded, fail safe hydraulic actuated brakes on front axle. |

TYRES

| | |
|-------|---------------------------|
| Front | 12 x 24 - 20PR [4 Nos.] |
| Rear | 17.5 x 25 - 20PR [2 Nos.] |

BOOM

3 Part Boom- Hydraulically Powered & Fully Synchronised Luffing Range -3° to +65°

HOIST MECHANISM

6 Falls, Hydraulic Winch

ELECTRICAL SYSTEM

24 V Negative Earth, 130 AH x 2 Battery

DIMENSIONS

| | |
|-------------------|----------|
| Wheel Base | 4800 mm |
| Overall Length | 10475 mm |
| Overall Width | 2870 mm |
| Overall Height | 3100 mm |
| Front Wheel Track | 2500 mm |
| Rear Wheel Track | 2080 mm |

OPERATING WEIGHT TRAVEL WORK (BOLTABLE CWT)

| | | |
|-------------------|-------|-------|
| Front Axle Weight | 8705 | 7600 |
| Rear Axle Weight | 10050 | 12100 |
| Total Weight | 18755 | 20070 |

CAPACITIES

| | |
|----------------|------------|
| Fuel Tank | 280 litres |
| Hydraulic Tank | 245 litres |

STANDARD ACCESSORIES

| | |
|-------------------------------|------------------------|
| Drag Winch - Line pull 2500Kg | Operator Cabin |
| Rear view mirror | Reflectors |
| Turn Indicator & Reverse lamp | Lockable battery box |
| Mobile Charger | Cabin Fan |
| Tyre Guard | Reverse Parking Camera |
| Telematics | Tow Hook |
| Articulation Lock | Safe Load Indicator |

SAFETY SYSTEM

Audio, Visual

- Anti-Topping System**
Whenever Rear Axle leaves ground in case of undulation/off road Craning operation
- Outrigger Home Position Sensing**
Whenever Outrigger leaves its home position
- Human Proximity Sensor**
Whenever human or any obstructions come near machine- 2 nos side sensor and 2 nos front sensors activate
- Integration of SLI with Telematics**
SLI data will come on Telematics server and Mobile application

Visual

- De - Rated Overload articulation**
Automatic deration of Load values in SLI based on Load chart and physical load lifted

Audio

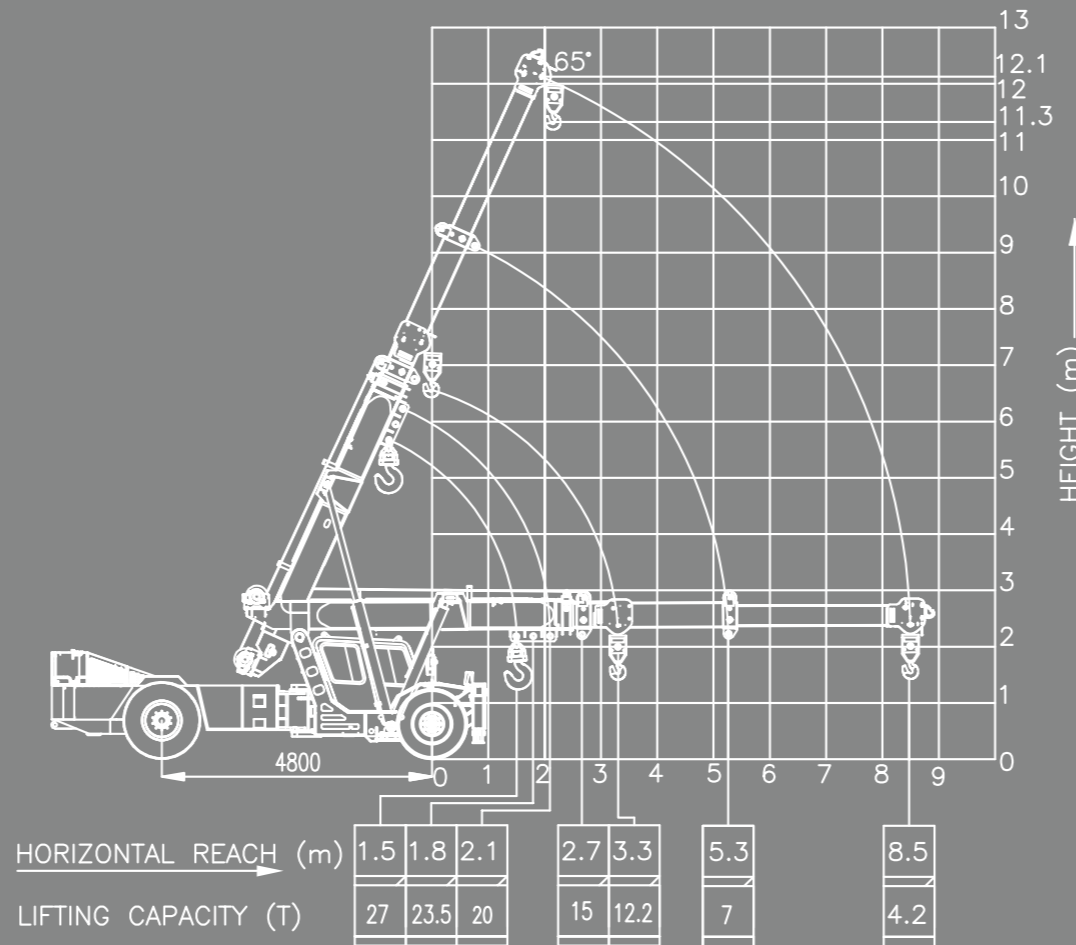
- Chassis Lateral & Longitudinal Angle Sensing**
Alarm (unsafe stability) when machine is working in undulation ground
- Use of 1st & Reverse Gear for Craning Operation, speed ≤ 2 kmph**
- Use of Outrigger for machine working on max height to avoid toppling of machine**
- Retraction of forward movement of rear wheel drive machine, while working on outriggers**



Battery Cut off Switch

TECHNICALS

Load chart



Features

HYDRAULIC CLUTCH

Low effort hydro pneumatic clutch to reduce operator fatigue.

ELECTRONIC ACCELERATOR PEDAL

Accelerator Pedal - Low effort electronic accelerator pedal reduce operator fatigue.

ECU EMS SYSTEM

ECU EMS - Electronic Control Unit for Engine Management System for Engine diagnosis and troubleshooting.

IGNITION ON/OFF

Ignition key to switch off engine, no more use of stop cable to engine put off.

HPCR SYSTEM

HPCR - High Pressure Common Rail System - HPCR provide cleaner exhaust, deliver more horsepower and fuel efficiency per displacement.

ROCKER SWITCHES

Rocker Switch with more reliable and better aesthetic appearance, low operator fatigue.

CLUSTER

Single Digital Cluster with all gauges, fault code detection for engine system, date and time display feature, less number of wiring harness.

SAFETY FEATURES

OUTRIGGER HOME POSITION SENSING SYSTEM (OHPSS)

Whenever Outrigger leaves its home position then blow audio alert and indicator arises

USE OF 1ST & REVERSE GEAR FOR CRANING OPERATION, SPEED ≤ 2 KMPH. AUDIO ALARM WILL BLOW.

MANDATORY OUTRIGGER MECHANISM FOR ERECTION JOBS

Whenever Boom open more than 10 m & 39 deg., alarm blow for opening Outrigger for safe operation

RETRACTION OF FORWARD MOVEMENT IN ENGAGED OUTRIGGER CONDITION

When Outrigger are in open condition audio alert will blow.

SAFE MODE OPERATION (NO BYPASSING ALLOWED)

Safe Mode Operation while over loading/unsafe condition by restricting lifting load, opening boom and Lift down operation.

LATERAL & LONGITUDINAL ANGLE SYSTEM

(unsafe stability) when machine is working in undulation ground / unsafe stability, Alarm start blowing

ANTI-TOPPLING SYSTEM

Whenever Rear Axle leaves ground in case of undulation/off road Craning operation, buzzer will beep and brake will applied.

HUMAN PROXIMITY SENSOR

Whenever human or any obstructions come near machine, sensors will get activated mounted on front, LH & RH side

INTEGRATION OF SLI WITH TELEMATICS

Calculate safe load or not recommending for overload, (SLI) data available on telematic server and mobile application

DE- RATED OVERLOAD ARTICULATION

Automatic deration of Load values in SLI based on Load chart and physical load lifted.

NOTE Technical modification reserved. All dimensions & weights are variable within ± 5% over indicated values.