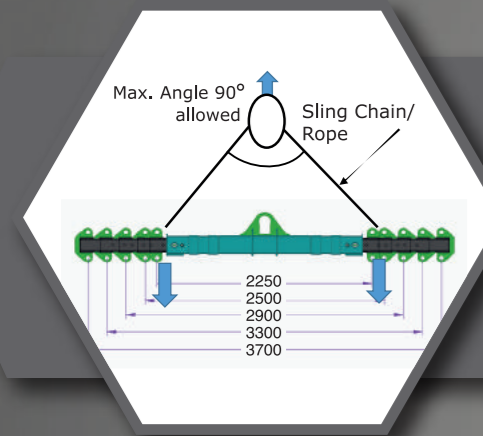


## ACCESSORIES



### SPREADER BAR CUM LIFTING BEAM

Spreader Bar is used to aid crane operators in picking up large and sometimes heavy loads. It increase the stability and handling of load during hoisting and traveling with load.

Lifting Capacity- 2.5 Tonnes to 15 Tonnes (depending on the crane load chart)

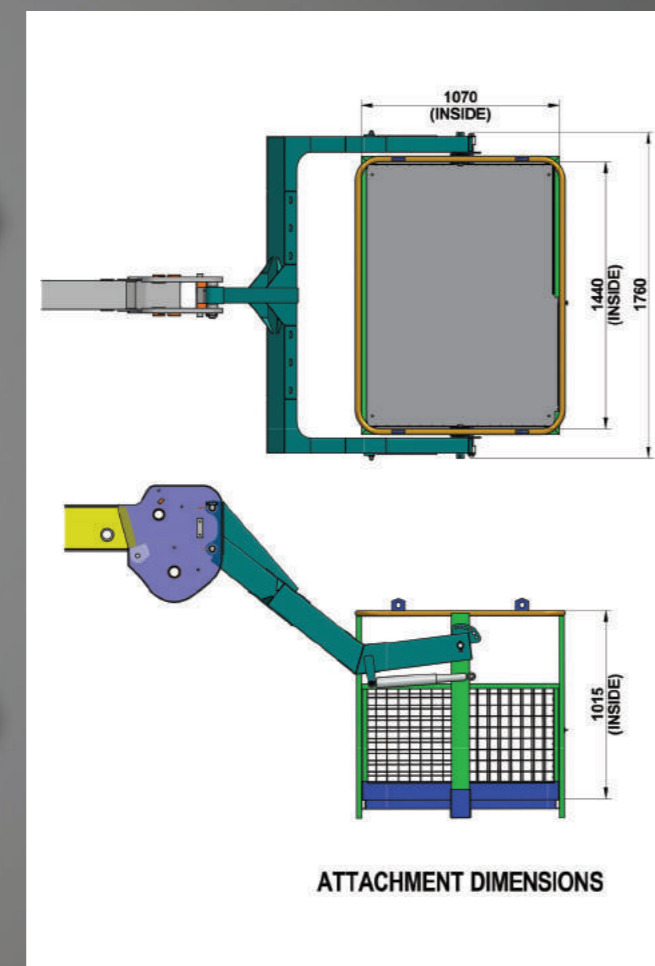
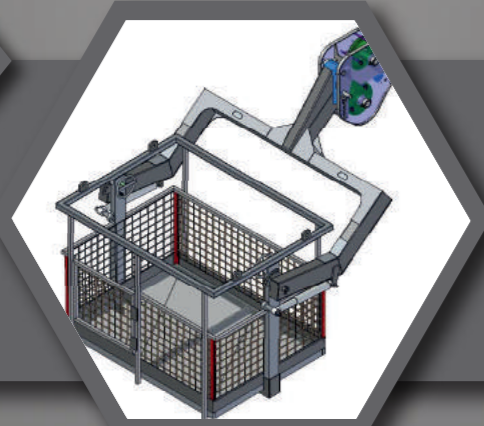
Beam Expend Range: 2250 mm to 3700 mm

Note: Attachment view is for ref. only. Physical part may be differ from provided.

### MAN CARRYING BASKET

ATTACHMENT SPECIFICATION		
ATTACHMENT WEIGHT	KG	240
MAX. CAPACITY	KG	235
NO. OF PERSONS.	N°	2
PLATFORM LENGTH	mm	1440
PLATFORM WIDTH	mm	1070

**Intended use**  
The machine has been designed to lift people and handle small tool, max load 235 kg or 2 persons



## SUPPORT NETWORK

### Experience Our Mobile Service Van For Fast And Reliable Solutions



#### ADDRESS:

**North Zone**  
ESCORTS LTD. - CONSTRUCTION EQUIPMENT  
4<sup>th</sup> Floor 409, Jasola Vihar,  
Elegance Tower, Near Apollo Metro Station,  
New Delhi – 110019

**East Zone**  
ESCORTS LTD. - CONSTRUCTION EQUIPMENT  
Eco Centre, Ambuja Neotia,  
609, 6<sup>th</sup> Floor, EM Block,  
Salt Lake Sector-V, Kolkata – 700091

**West Zone**  
ESCORTS LTD. - CONSTRUCTION EQUIPMENT UNIT 1,  
3<sup>rd</sup> Floor, A-Wing, Times Sqaure,  
Andheri - Kurla Road, Opp. Mittal Industrial Estate,  
Andheri (East), Mumbai – 400059

**South Zone**  
ESCORTS LTD. - CONSTRUCTION EQUIPMENT  
Subham Square, 1<sup>st</sup> Floor, S.No.41/9, 1<sup>st</sup> Main Road,  
Karambakkam, Porur, Chennai – 600116.

## WHEN YOU NEED EXTRA F1721



Image not printable

Capacity 17 T | Boom Height with Fly Jib 21 M | Snatch Block Heavy Duty (6 Falls)  
Creep Speed 1.3 kmph | Structure Heavy Duty | Speed 49 kmph

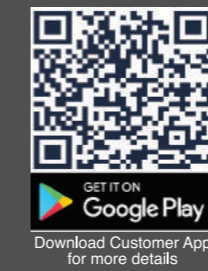
**BE CAREFUL!**  
When in the firm the same machine is to be used by more than one operator, working instructions as well as the use and maintenance manual must be conveyed to all the operators in charge of the machine.



Customer Support No.:  
**1800 180 4488**  
(Timings: 9.30 am - 6.00 pm, Monday to Friday)

E-mail:  
[ece.marketing@escorts.co.in](mailto:ece.marketing@escorts.co.in)

Escorts Construction Equipment: Plot No. 219, Sector-58, Ballabhgarh- 121004, Faridabad, Haryana (INDIA)  
Tel.: 0129-2306574/2306598/2306571 Fax: 0129-2306572 Website: [www.escortsgroup.com](http://www.escortsgroup.com)



# ESCORTS WHITE LINE



## SPECIFICATIONS

### RATED CAPACITY

17 Tonne at	1.5 m radius
1 Tonne at	15.80 m radius
Max Hook Height	18.2 m
SWL based on 85% stability and strength (IS 4573)	

### ENGINE (BS IV)

Volvo - Eicher make CEV BS IV Diesel Engine, Model E494TCI - High Pressure Common Rail System (HPCR) Technology, Turbo Charged Water Cooled, ECU Control Engine Management System, Developing 74 Kw/101HP @ 2200 RPM or Equivalent Engine.

### TRANSMISSION & CLUTCH

Engine is coupled with Synchronesh Transmission Gear Box and Auxiliary Gear Box with high/low & 2WD/4WD mode selector  
Clutch  
Clutch Actuation  
Speeds

Single, dry type friction clutch plate (self adjusting)  
Pneumatic assisted Hydraulic clutch.  
10 Forward & 2 Reverse

### STEERING

Full power orbitol with twin hydraulic double acting 40° articulation on either side

### VEHICLE PERFORMANCE

Speed Max	49 kmph
Creep Speed	1.3 kmph
Gradeability	40% unladen

### DRIVE

4 Wheel Drive

### AXLES

Front	Rigidly mounted
Rear	Mounted with two semi-elliptical springs

### BRAKES

Service	Fully air operated 'S' cam dual circuit brakes on front & rear axles
Parking	Air operated, spring actuated, fail safe brakes

### TYRES

Front	11 x 20 - 16 PR [4 Nos.]
Rear	11 x 20 - 16 PR [4 Nos.]

### HYDRAULIC SYSTEM

Main pump of 46 cc/rev  
Control Valve - 6 spool double acting with a built in relief & auxiliary valves

### BOOM

4 parts Slotted Boom with 3 parts hydraulically powered & fully synchronized, 4th part power extended and manually pinned for safety.  
Luffing Range -10° to +65°

### DIMENSIONS

Wheel Base	3950 mm
Overall Length	10075 mm
Overall Width	2450 mm
Overall Height	3215 mm
Front Wheel Track	1825 mm
Rear Wheel Track	1825 mm

### HOIST

Hydraulically operated with 6 falls, built in safety brakes

### ELECTRICAL SYSTEM

24V, DC

### STRUCTURE AND STABILITY

Robust high strength light weight chassis  
Lower CG position & better stability

### OPERATING WEIGHT

Front Axle	6760 kg
Rear Axle	10150 kg
Total	16910 kg

### TURNING RADIUS

7.2 m

### STANDARD ACCESSORIES

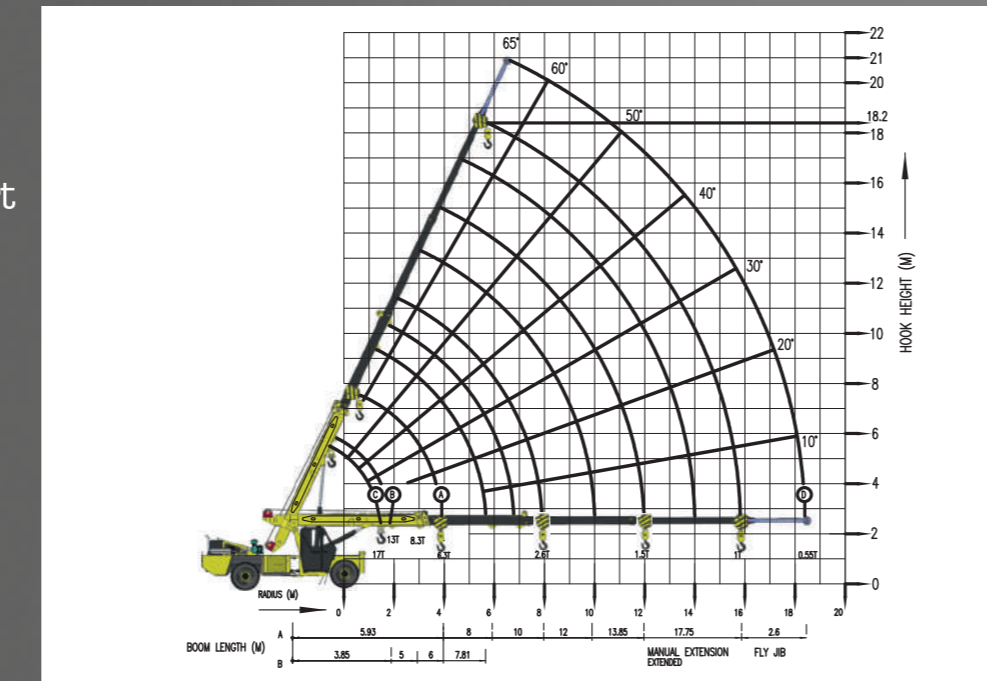
Operator Cabin  
Mobile Charger  
Concealed Lockable battery  
Tyre Guard  
Rear View Camera  
Helper Seat Platform  
Beacon Lamp  
Safe Load Indicator  
Drag Winch  
Fly Jib  
EMS

### OPTIONAL ACCESSORIES

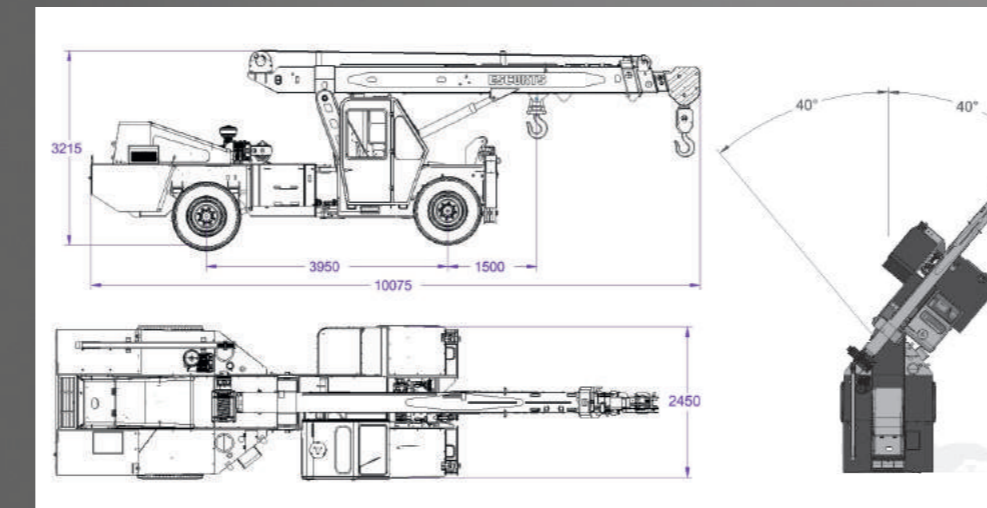
RHINO Hook  
Fire Extinguisher

## TECHNICALS

### Load Chart



Rated loads are calculated for operation on leveled surface.



Load Chart Required

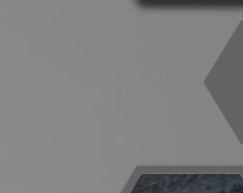
Image Required

## Features



### HYDRAULIC CLUTCH

Low effort hydro pneumatic clutch to reduce operator fatigue.



### ELECTRONIC ACCELERATOR PEDAL

Accelerator Pedal - Low effort electronic accelerator pedal reduce operator fatigue.



### ECU EMS SYSTEM

ECU EMS - Electronic Control Unit for Engine Management System for Engine diagnosis and troubleshooting.



### IGNITION ON/OFF

Ignition key to switch off engine, no more use of stop cable to engine put off.



### HPCR SYSTEM

HPCR - High Pressure Common Rail System - HPCR provide cleaner exhaust, deliver more horsepower and fuel efficiency per displacement.



### ROCKER SWITCHES

Rocker Switch with more reliable and better aesthetic appearance, low operator fatigue.



### CLUSTER

Single Digital Cluster with all gauges, fault code detection for engine system, date and time display feature, less number of wiring harness.

\*Photo may be change w.r.t actual in equipment

## SAFETY FEATURES



### OUTRIGGER HOME POSITION SENSING SYSTEM (OHPSS)

Whenever Outrigger leaves its home position then blow audio alert and indicator arises



### USE OF 1ST & REVERSE GEAR FOR CRANING OPERATION, SPEED ≤ 2 KMPH. AUDIO ALARM WILL BLOW.

### MANDATORY OUTRIGGER MECHANISM FOR ERECTION JOBS

Whenever Boom open more than 10 m & 39 deg., alarm blow for opening Outrigger for safe operation

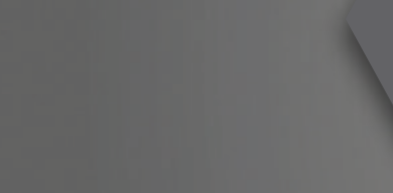
### RETRACTION OF FORWARD MOVEMENT IN ENGAGED OUTRIGGER CONDITION

When Outrigger are in open condition audio alert will blow.



### SAFE MODE OPERATION (NO BYPASSING ALLOWED)

Safe Mode Operation while over loading/unsafe condition by restricting lifting load, opening boom and Lift down operation.



### LATERAL & LONGITUDINAL ANGLE SYSTEM

(unsafe stability) when machine is working in undulation ground / unsafe stability, Alarm start blowing



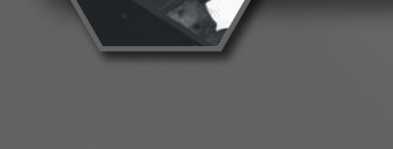
### ANTI-TOPPLING SYSTEM

Whenever Rear Axle leaves ground in case of undulation/off road Craning operation, buzzer will beep and brake will applied.



### HUMAN PROXIMITY SENSOR

Whenever human or any obstructions come near machine, sensors will get activated mounted on front, LH & RH side



### INTEGRATION OF SLI WITH TELEMATICS

Calculate safe load or not recommending for overload. (SLI data available on telematic server and mobile application)

NOTE: Technical modification reserved. All dimensions & weights are variable within ± 5% over indicated values.

\*Accessories shown in the picture may not be the part of standard fitment and are subject to change without prior notice.