

SUPPORT NETWORK

Experience Our Mobile Service Van For Fast And Reliable Solutions



ADDRESS:

North Zone
ESCORTS LTD. - CONSTRUCTION EQUIPMENT
4th Floor 409, Jasola Vihar,
Elegance Tower, Near Apollo Metro Station,
New Delhi -110019

East Zone
ESCORTS LTD. - CONSTRUCTION EQUIPMENT
Eco Centre, Ambuja Neotia,
609, 6th Floor, EM Block,
Salt Lake Sector-V, Kolkata – 700091

West Zone
ESCORTS LTD. - CONSTRUCTION EQUIPMENT UNIT 1,
3rd Floor, A-Wing, Times Sqaure,
Andheri - Kurla Road, Opp. Mittal Industrial Estate,
Andheri (East), Mumbai 400059 (Maharashtra)

South Zone
ESCORTS LTD. - CONSTRUCTION EQUIPMENT
1st Floor, Bearing No - FF 2, in Subham Square,
Survey Number 41/9, 1st Main Road and 1st Street,
Tarambakkam, Porur,
Chennai - 600116

MKT21.1/HYDRA1211

WHEN YOU NEED EXTRA **HYDRA 1211**



Capacity: 12 T | Boom Height: 36 Feet | Service Interval Engine: 500 hrs. | Straight Axle: Heavy Duty | Transmission: Robust (8+2)



Customer Support No.:
1800 180 4488

(Timings: 9:30 am - 6:00 pm, Monday to Friday)

E-mail:
ece.marketing@escorts.co.in

Escorts Construction Equipment: Plot No. 219, Sector-58, Ballabhgarh- 121004, Faridabad, Haryana (INDIA) Tel.: 0129-2306574/2306598/2306571
Fax: 0129-2306572 Website: www.escortsgroup.com

ESCORTS WHITE LINE

SPECIFICATIONS

RATED CAPACITY

12 Tonne at	1.7 m radius
2.2 Tonne at	8.2 m radius

ENGINE

Make & Model	Escorts AE 4.312C-3A four cylinder, water cooled diesel engine, developing 49.5 HP @ 2200 RPM or equivalent.
--------------	--

TRANSMISSION

Drive	2 Wheel drive
Type	Heavy duty transmission developed especially for crane application. Constant mesh gearbox coupled with straight drive axle. Eight forward and two reverse speeds with high/low selector lever.
Max. Speed	29 km/hr. (unladen)
Clutch	Heavy duty clutch, wire woven, asbestos free.

STEERING

Type	Articulated power steering, hydraulically controlled through 2 double acting jacks.
Articulation	Up to 53°
Turning Radius	6.5 m

HOIST MECHANISM

Hoist	Hydraulic winch. Four falls. Rope dia 13 mm
-------	---

BRAKES

Front Wheel	Pneumatic assisted hydraulic brakes
Rear Wheel	Disc brakes actuated through a slave cylinder
Parking	Hand operated mechanically actuated at rear wheels

HYDRAULIC SYSTEM

Pump Control Valve	Vane type hydraulic pump
Control Valve	4 spool control valve with built in pressure relief valve and precision control

ELECTRICAL SYSTEM

Type	12V Single battery, Negative earth
------	------------------------------------

CAPACITIES

Fuel Tank	45 ltrs.
Hydraulic Tank	65 ltrs.

OVERALL DIMENSIONS

Width	2550 mm
Height	3100 mm
Length	10920 mm

OPERATING WEIGHT (KG)

10200 kg

BOOM

Telescoping	3 parts hydraulically powered & fully synchronized
Derricking	Through double acting jacks

TYRES

Front	10.00 X 20 -16 PR (4 nos.), inflation pressure 110-115 PSI
Rear	13.00 X 24 -12 PR (2 nos.), inflation pressure 35 PSI. Water ballasted

SAFETY DEVICES

- Overload audio warning system
- Safety brakes on hoist
- Cylinder guard for protection
- Rope compensation for auto leveling
- Counter balance protection valve in the lift line against hose burst
- Visual warning against parking brakes ON

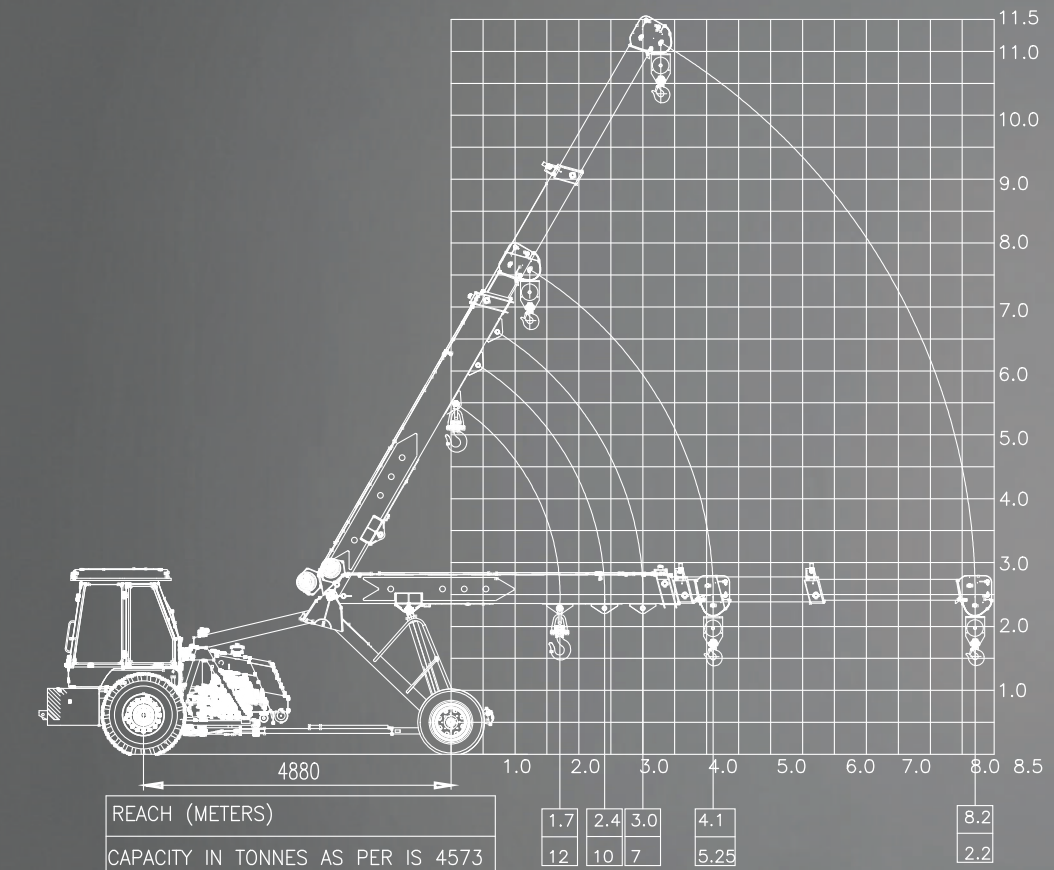
STANDARD ACCESSORIES

- All Weather Cabin
- Lift Cylinder Guard
- Turn & Reverse Lamp
- Front Bumper
- Rear View Mirror
- Reflectors

OPTIONAL ACCESSORIES

- Tool Box
- Spark Arrestor
- Tyre Mud Guard
- Steering Wheel
- Fire Extinguisher
- Safe Load Indicator
- Heavy Duty Bumper
- 14 x 24 Heavy Duty Tyres
- Air Brakes on Front Wheel
- Over Hoist & Hydraulic Cutoff Kit

PERFORMANCE, DIMENSIONS & FEATURES



STRUCTURE

Robust structure for strength and durability



CABIN

Ergonomically designed spacious cabin with modern dashboard for utmost operator comfort and operation.



TRANSMISSION

Heavy duty straight axle with constantmesh 8+2 transmission.

ENGINE

Escorts engine BS-III (CEV compliant) high on power/ torque & low on fuel consumption & maintenance.



INCREASED STABILITY

At fully articulated condition. Wider lift cylinders span (400 mm).

Warning

The information contained in this leaflet is intended to be of a general nature. • We reserve the right to changed specifications without notice. • All Dimensions and weights are variable within +/-5%.*