

SUPPORT NETWORK

Experience Our Mobile Van Service For Fast And Reliable Solutions



ADDRESS:

North Zone
ESCORTS LTD - CONSTRUCTION EQUIPMENT
4th Floor 409, Jasola Vihar
Elegance Tower, Near Apollo Metro Station
New Delhi -110019

East Zone
ESCORTS LTD - CONSTRUCTION EQUIPMENT
Eco Centre, Ambuja Neotia,
609, 6th Floor, EM Block,
Salt Lake Sector-V, Kolkata – 700 091

West Zone
ESCORTS LTD - CONSTRUCTION EQUIPMENT UNIT 1,
3RD FLOOR, A-WING, TIMES SQUARE,
ANDHERI - KURLA ROAD, OPP MITTAL INDUSTRIAL ESTATE,
ANDHERI (EAST), MUMBAI 400059 (MAHARASHTRA)

South Zone
ESCORTS LTD - CONSTRUCTION EQUIPMENT
First Floor, bearing No - FF 2, in Subham Square,
Survey Number 41/9, 1st Main Road and 1st Street,
Tarambakkam, Porur,
Chennai - 600 116

WHEN YOU NEED EXTRA **NXT 1313**



Front Outriggers | Low Creep Speed - 2.1 Kmph | Fail Safe Pneumatic Brakes
Short Turning Radius | 500 Hours Engine Service Interval



ESCORTS WHITE LINE

Customer Support No.:
1800 180 4488
(Timings: 9.30 am - 6.00 pm, Monday to Friday)

e-mail:
ece.marketing@escorts.co.in

Escorts Construction Equipment: Plot No. 219, Sector-58, Ballabhgarh- 121 004, Faridabad, Haryana (INDIA) Tel.: 0129-2306574/2306598/2306571
Fax: 0129-2306572 Website: www.escortsgroup.com

SPECIFICATIONS

RATED CAPACITY

13 Tonne at	1.5 m radius
1.5 T at	10 m radius
Max Hook Height	13 m

ENGINE

Diesel engine of Escorts make, model AE4.312C-3A, water cooled, developing 49.5HP @ 2200 ERPM

TRANSMISSION & CLUTCH

Drive	2WD
Type	8+2 Constant Mesh Transmission
Clutch	Single, Dry type friction clutch plate
Speeds	8 forward and 2 reverse
Max Travel Speed	29 kmph
Creep Speed	2.1 Kmph
Gradeability	22%

STEERING

Type	Fixed type, Fully Powered orbitrol with twin Hydraulic double acting cylinders
Articulation	Up 45° on either side
Turning Radius	6.3 m

CONTROL VALVE

5 spool control valve with built in pressure relief valve and precision control.

AXLES

Front	Rigid Box Type Dead Axle
Rear	Robust Straight Axle

BRAKES

Front Wheel	Pneumatic assisted hydraulic brakes
Rear Wheel	Disc brakes actuated through a slave cylinder
Parking	Hand operated mechanically actuated at rear wheels

TYRES

Front	10 x 20 - 16PR [4 Nos.]
Rear	14 x 24 - 16PR [2 Nos.]

BOOM

Telescoping, 3 Part Slotted boom, box type hydraulically operated, through Double acting Jacks & rope compensation
Luffing Range -3° to 62°

HOIST MECHANISM

4 Falls, Hydraulic Winch (Capacity 10T) with 13 mm dia rope

ELECTRICAL SYSTEM

12 V Negative Earth, 75 AH x Single Battery

DIMENSIONS

Wheel Base	4350 mm
Overall Length	11400 mm
Overall Width	2550 mm
Overall Height	2850 mm
Front Wheel Track	1930 mm
Rear Wheel Track	1680 mm

OPERATING WEIGHT

Front Axle Weight	5010 Kg
Rear Axle Weight	8420 Kg
Total Weight	13430 kg

CAPACITIES

Fuel Tank	90 ltrs.
Hydraulic tank	90 ltrs.

SAFETY SYSTEM

Safety brake on hoist
Overhoist audio warning system (Optional)
Counter balance protection valve in the lift line against hose burst. Visual warning against parking brakes on.

STANDARD ACCESSORIES

Operator Cabin
Rear view mirror
Reflectors
Turn & Reverse lamp
Concealed Lockable battery

OPTIONAL ACCESSORIES

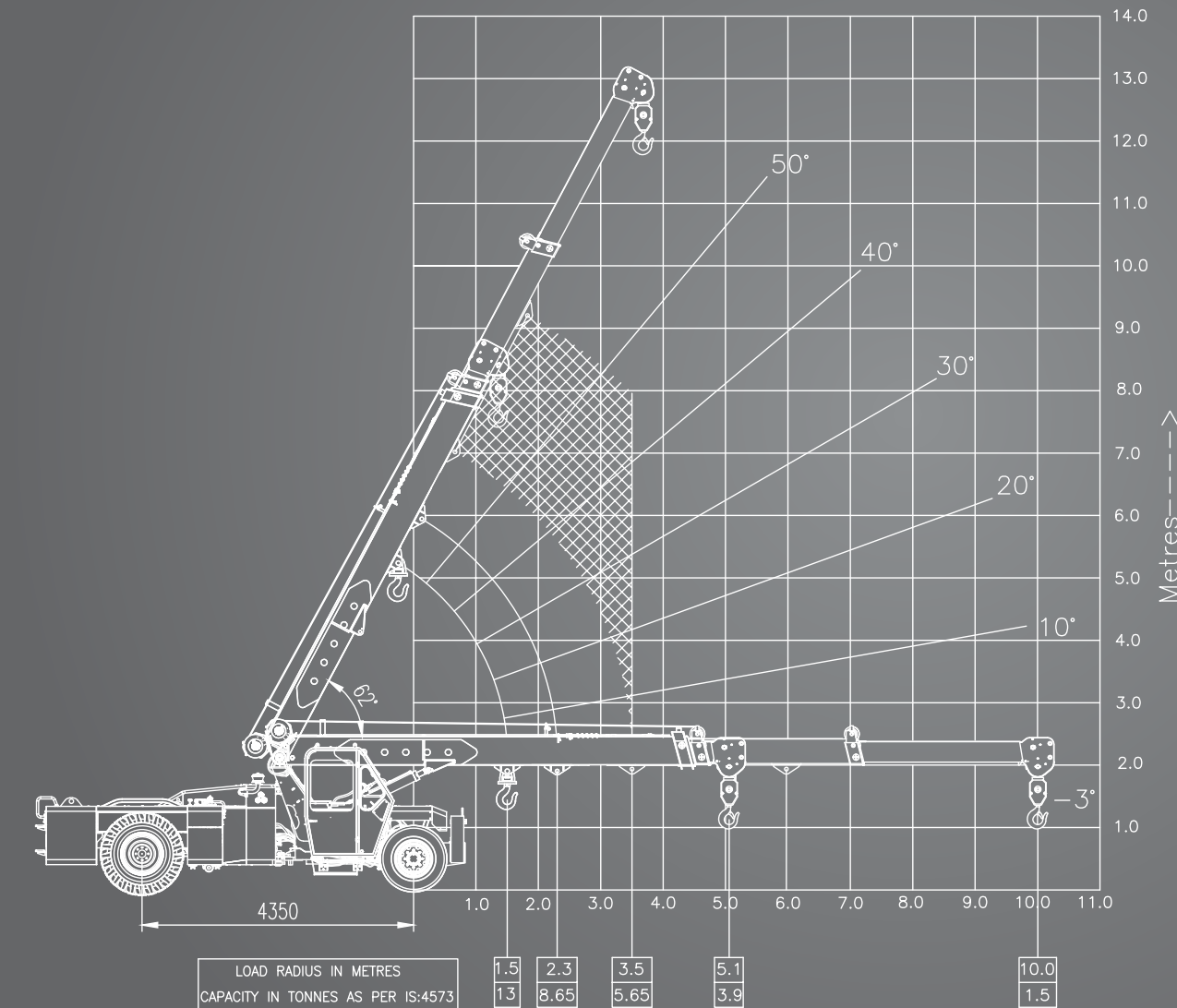
Safe Load Indicator
Reverse Parking System
Telematic & Stereo System
Fly Jib
HD Tyres
Becon Light
Mobile Charger
Cabin Fan
Air Brake

STRUCTURE Frames and boom are fabricated with high tensile steel plates, sections and with proven technology.

OPERATOR'S CAB & CONTROLS Operator cabin with steel construction, excellent visibility for craning operation, adjustable seat, automotive type controls like steering wheel, brakes, accelerator pedal, gear shifting etc.

Note: Technical modifications reserved. All dimensions & weights are variable within ± 5% over Indicated Values.

TECHNICALS



Rate loads are calculated for operation on leveled surface.



Helper Seat



Front Cabin : Better Visibility



SLI – Safe Load Indicator



Pneumatic Brakes